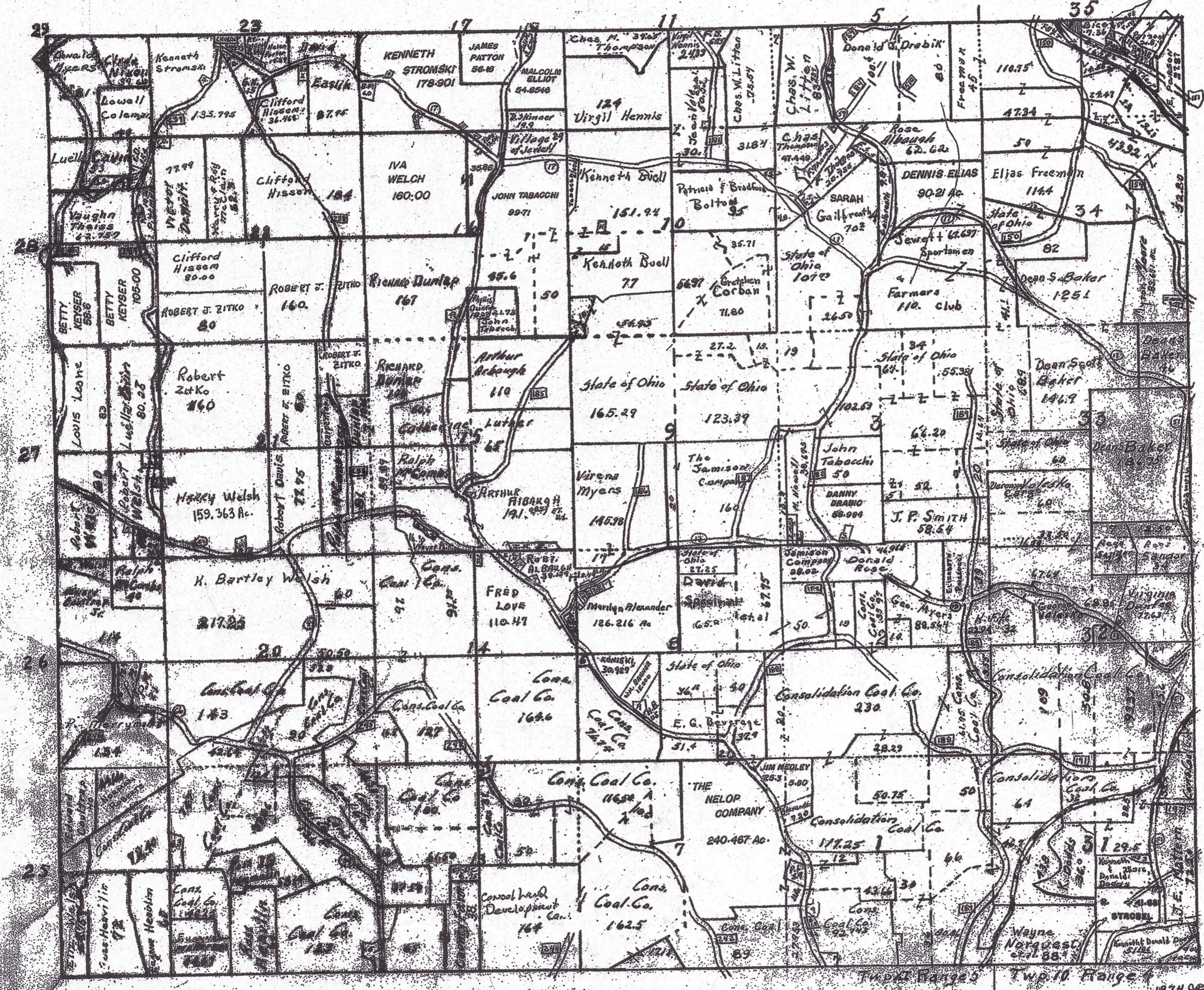


ARCHER TOWNSHIP

1974

○ COUNTY HWY
□ TWP. HWY
□ STATE HWY
Scale 1" = 2,000
Harrison Co. Eng. Dept



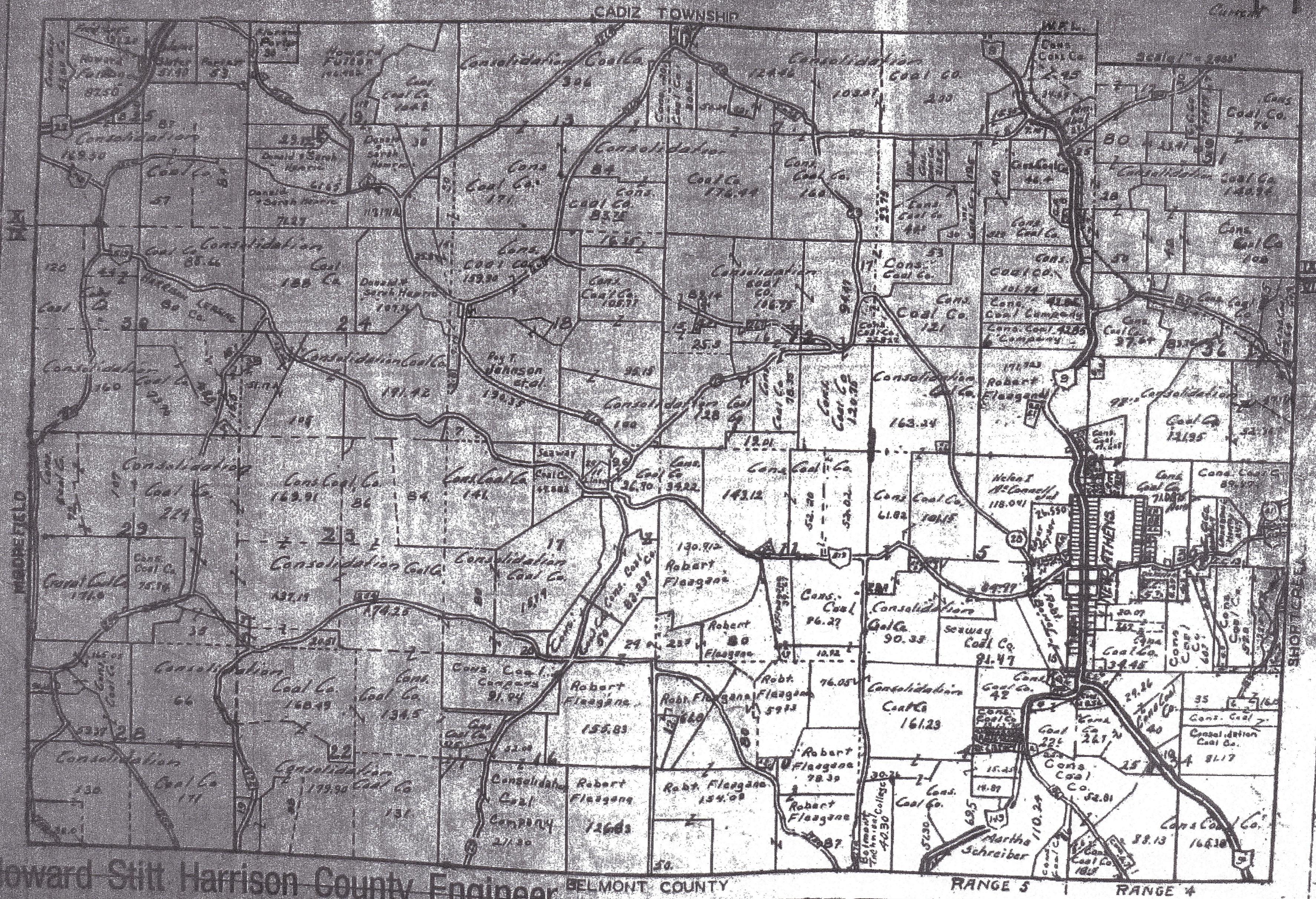
Howard Stitt Harrison County Engineer

Twp. 10 Range 5 Twp. 10 Range 4 1974 90

ATHENS TOWNSHIP

HARRISON COUNTY

1974



Howard Stitt Harrison County Engineer

BELMONT COUNTY

RANGE 5

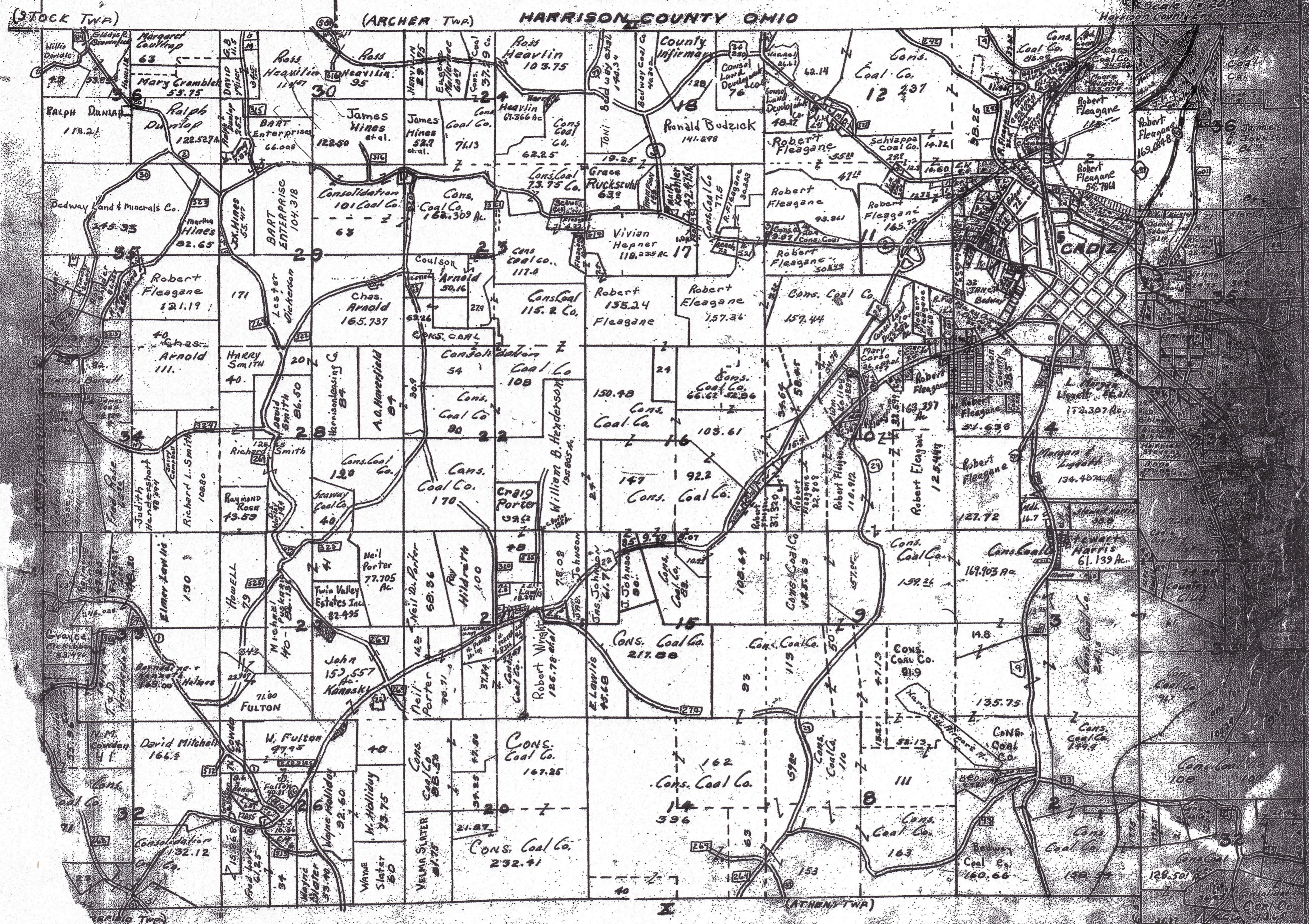
RANGE 4

1974

CADIZ TOWNSHIP
HARRISON COUNTY OHIO

Scale 1" = 2000'
Harrison County Engineering Dept.

1974



Howard Stitt Harrison County Engineer

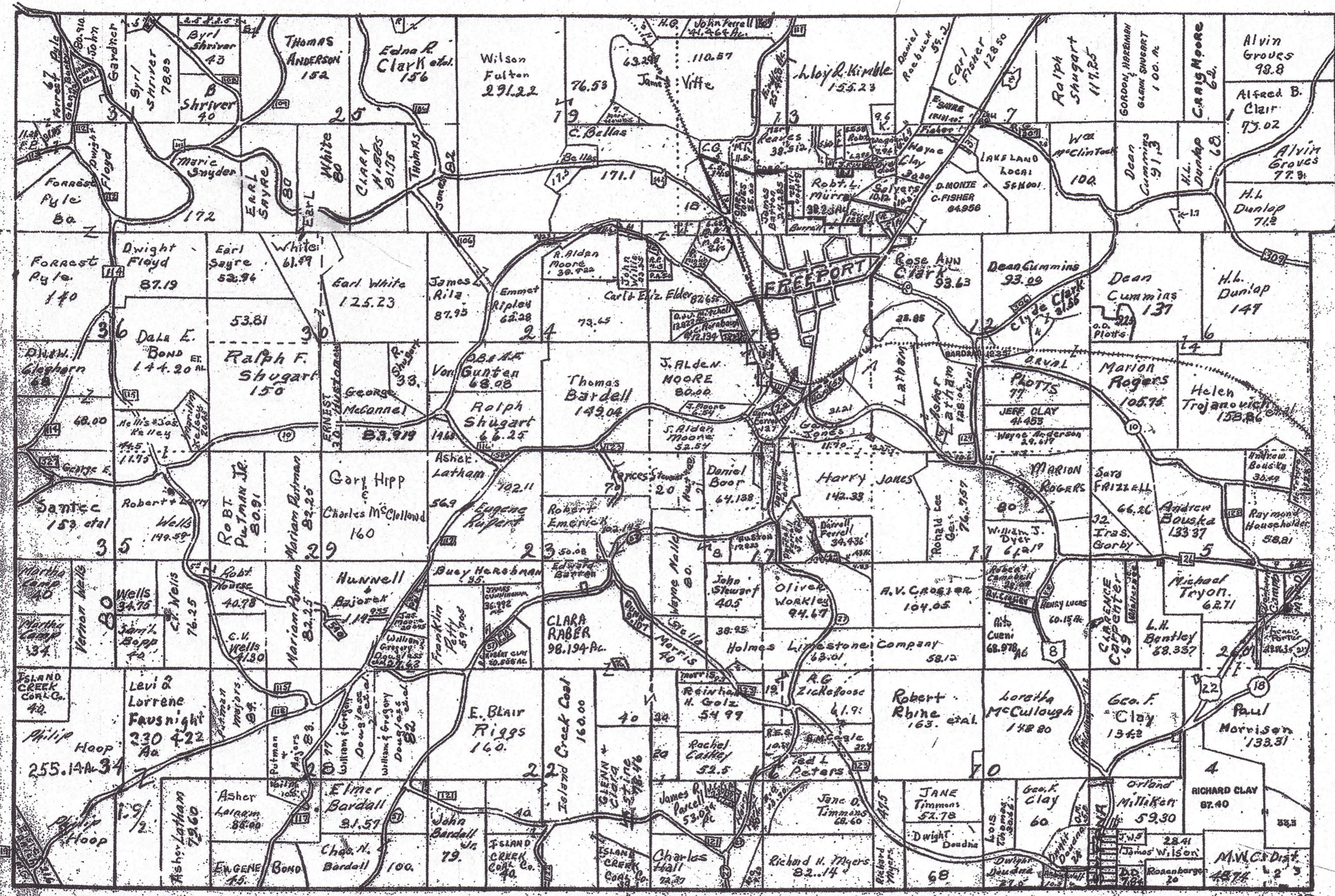
1974

FREEPORT TOWNSHIP

Current

1974

Scale 1" = 2000



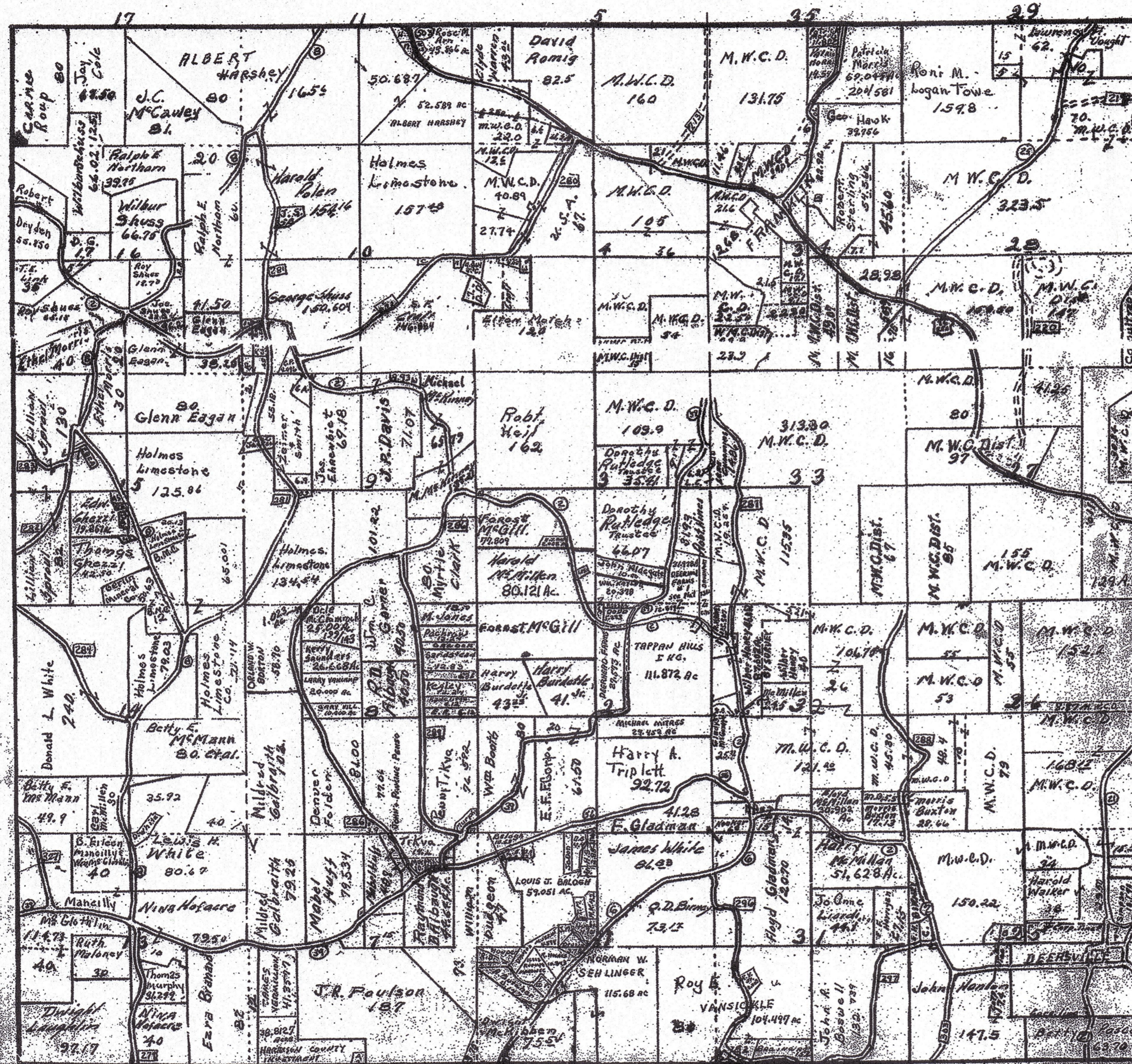
Howard Stitt Harrison County Engineer

FRANKLIN TOWNSHIP

Current

1974

Scale 1" = 2000'

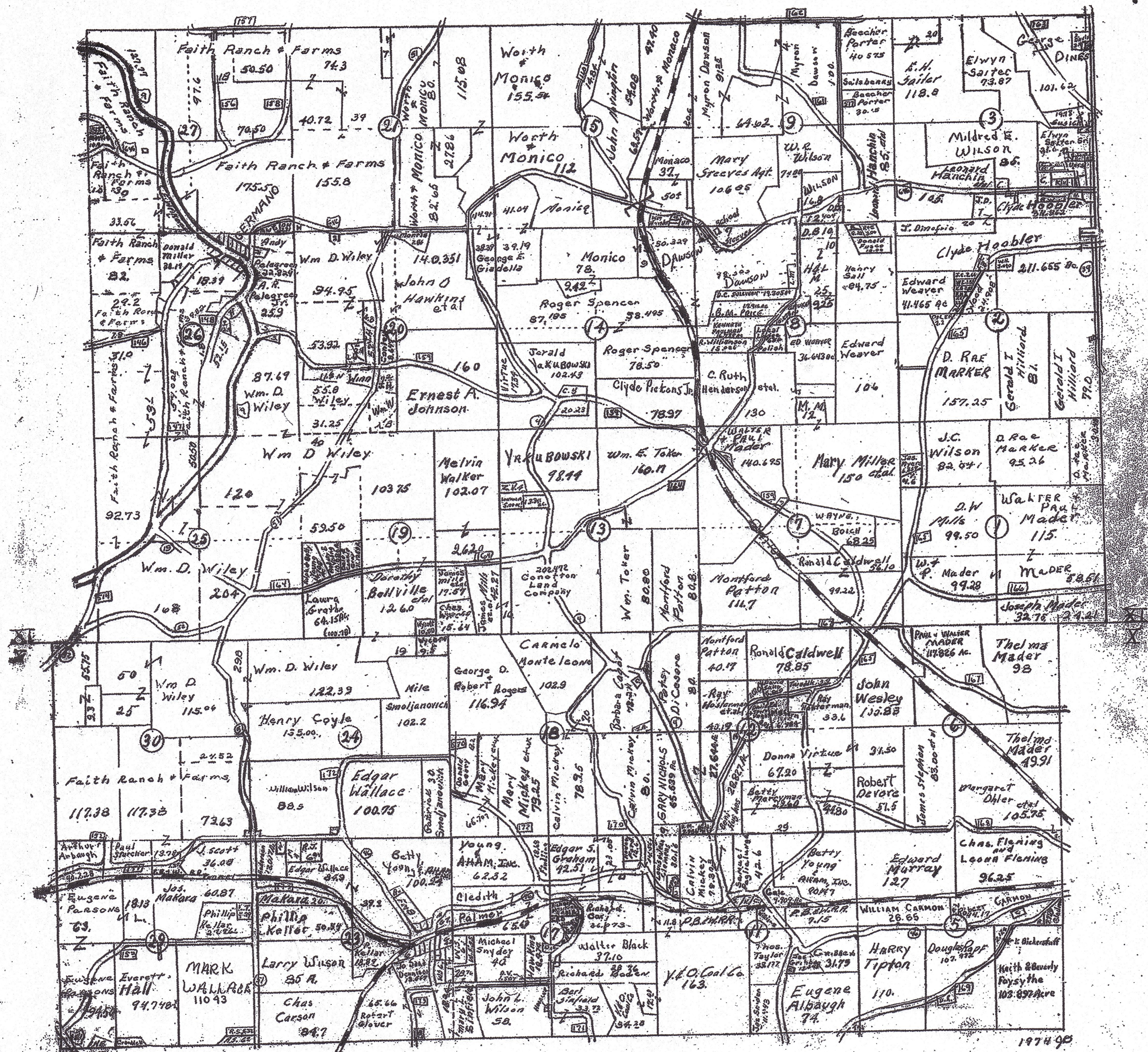


Howard Stitt Harrison County Engineer RANGE 6

GERMAN TOWNSHIP

Current
Scale: 1 inch = 2000'

1974



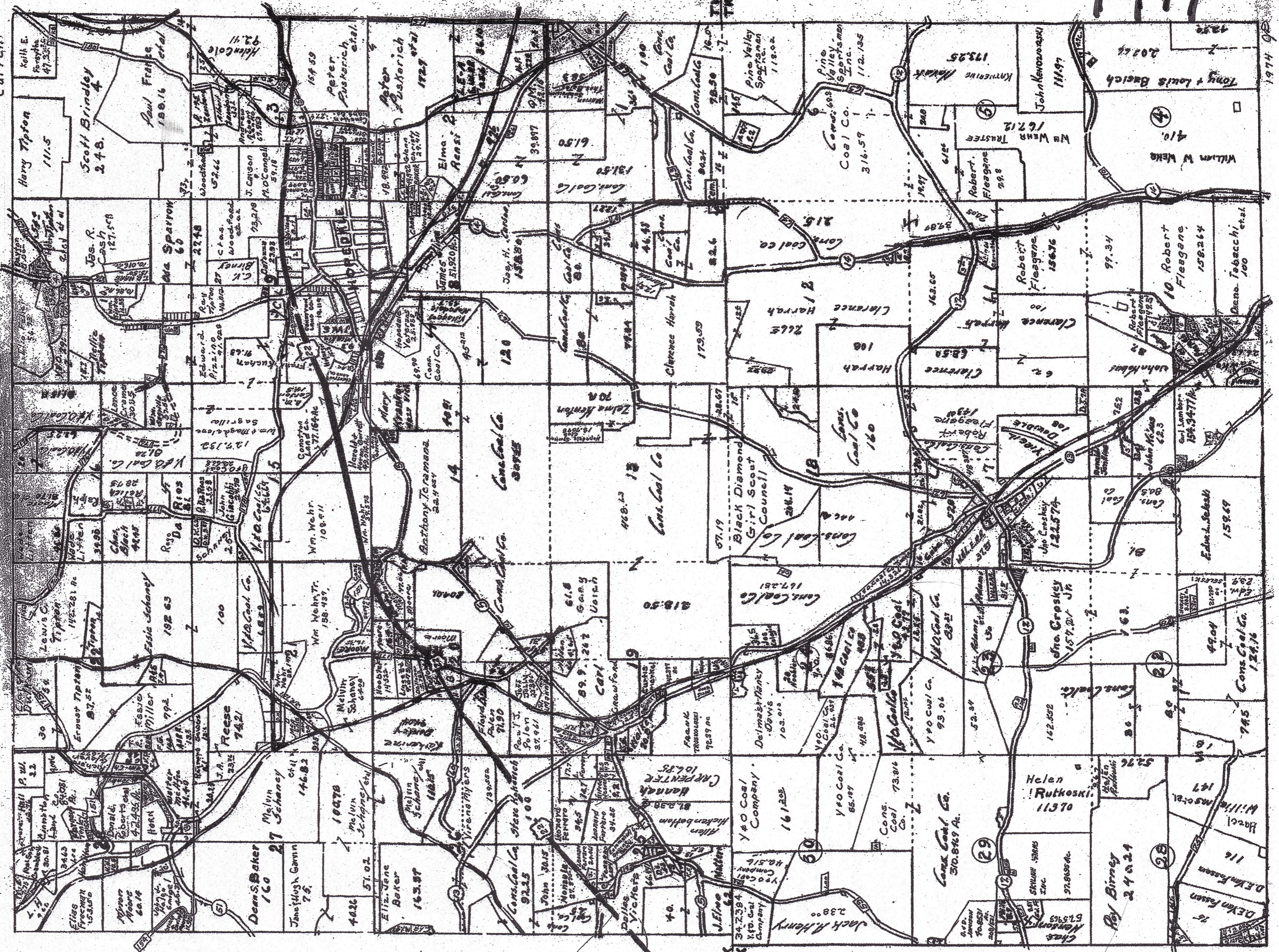
RANGE 4

Howard Stitt Harrison County Engineer

GREEN TWP.

Scale 1" = 2000'

Current



4691

1974 98

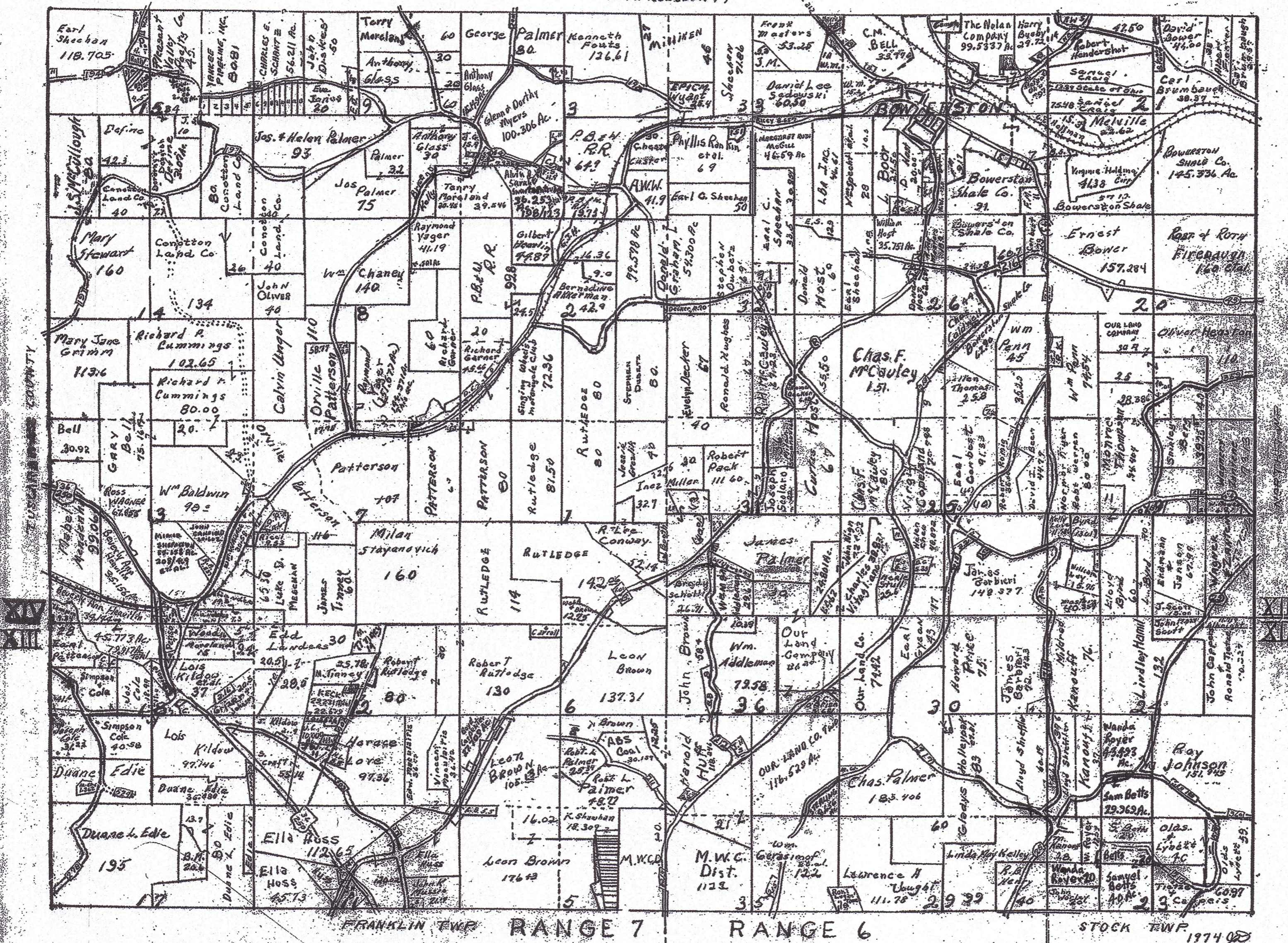
TPX
TPIX

MONROE TOWNSHIP

1974

Scale 1" = 1000' Current

CARROLL COUNTY



Howard Stitt Harrison County Engineer

MOOREFIELD TOWNSHIP

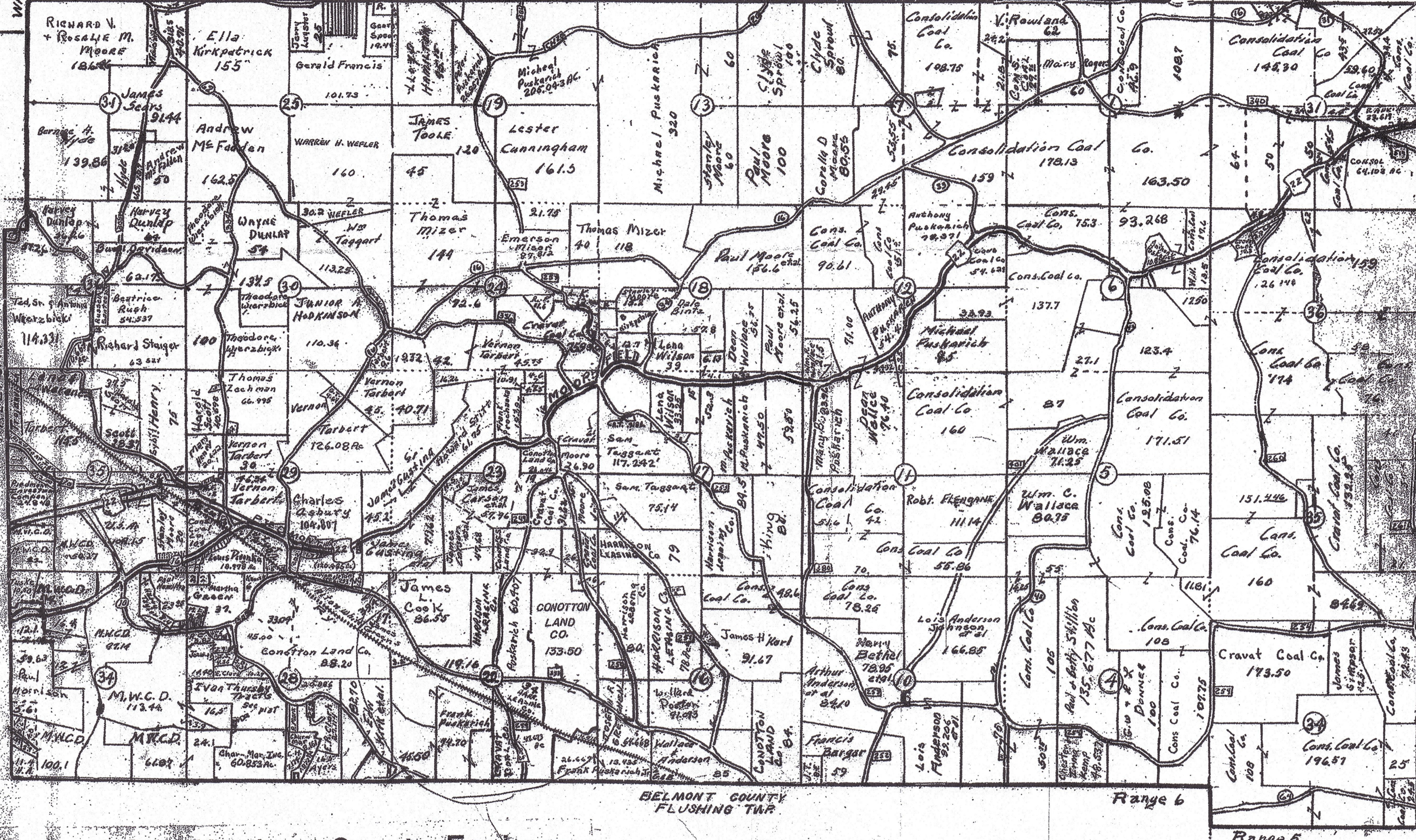
Revised Current 1974
CADIZ TWP

1974

WASHINGTON TWP

NOTTINGHAM TWP

Scale 1" = 2000



BELMONT COUNTY
FLUSHING TWP

Range 6

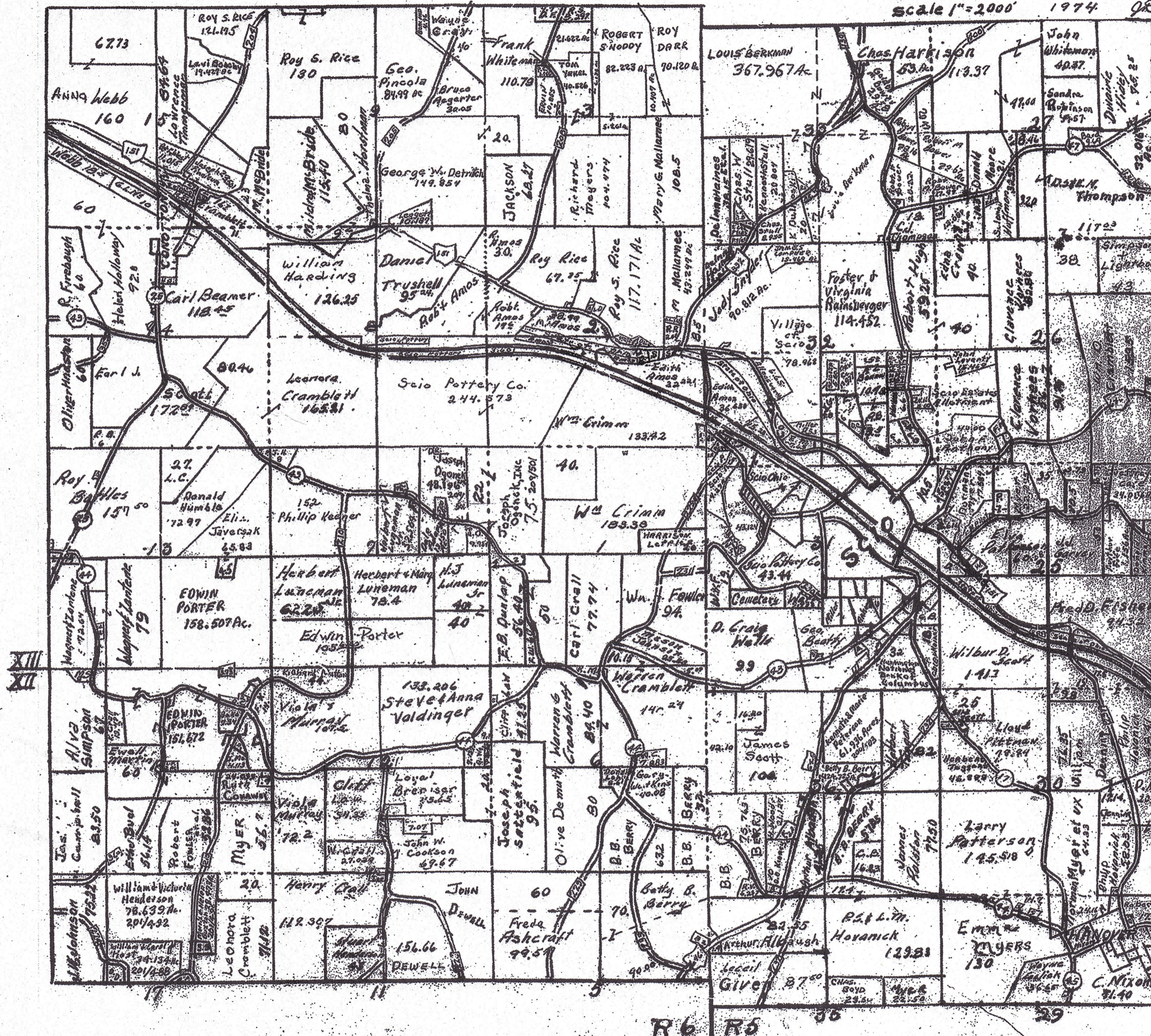
Range 5

Howard Stitt Harrison County Engineer

NORTH TOWNSHIP HARRISON COUNTY OHIO

1974

Current Scale 1"=2000' 1974



Howard Stitt Harrison County Engineer

NOTTINGHAM

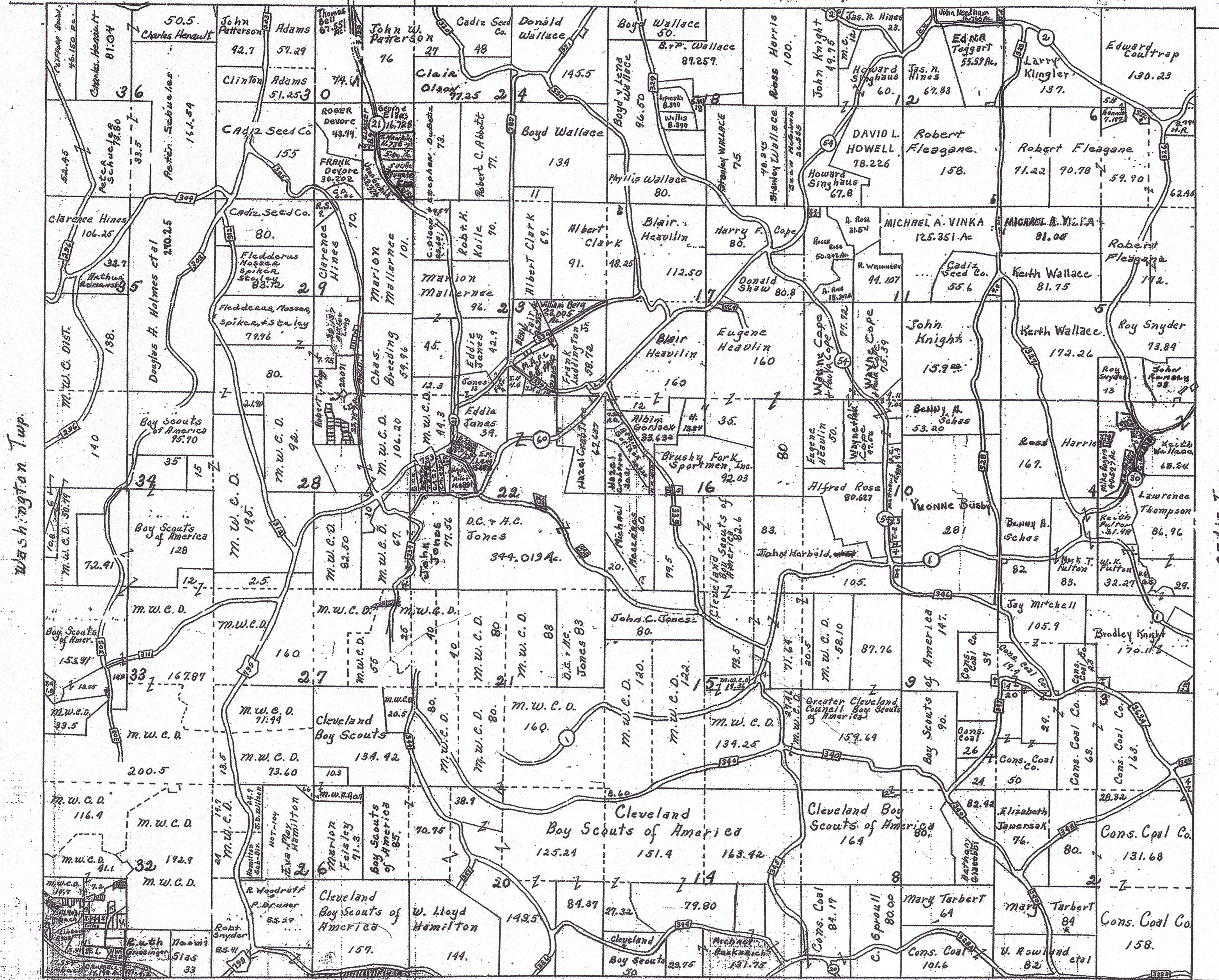
Franklin Twp.

Township VI

Stack Twp.

Copyright 1974

1974



Scale: 1 inch = 2000 ft.

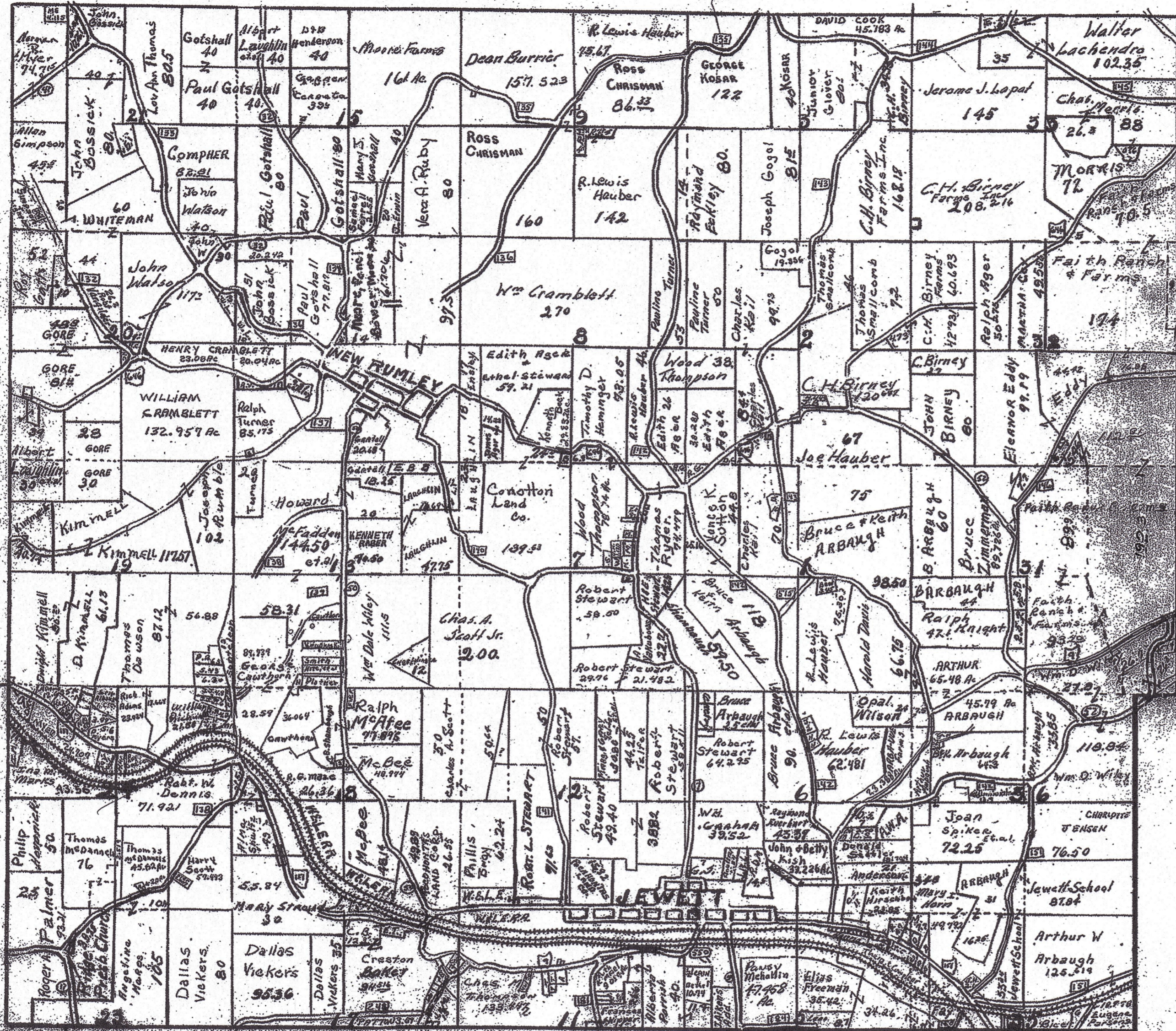
Howard Still Harrison County Engineer

1970
B.G.S.

RUMLEY TOWNSHIP

Current 1974
Scale 1" = 2000'

1974



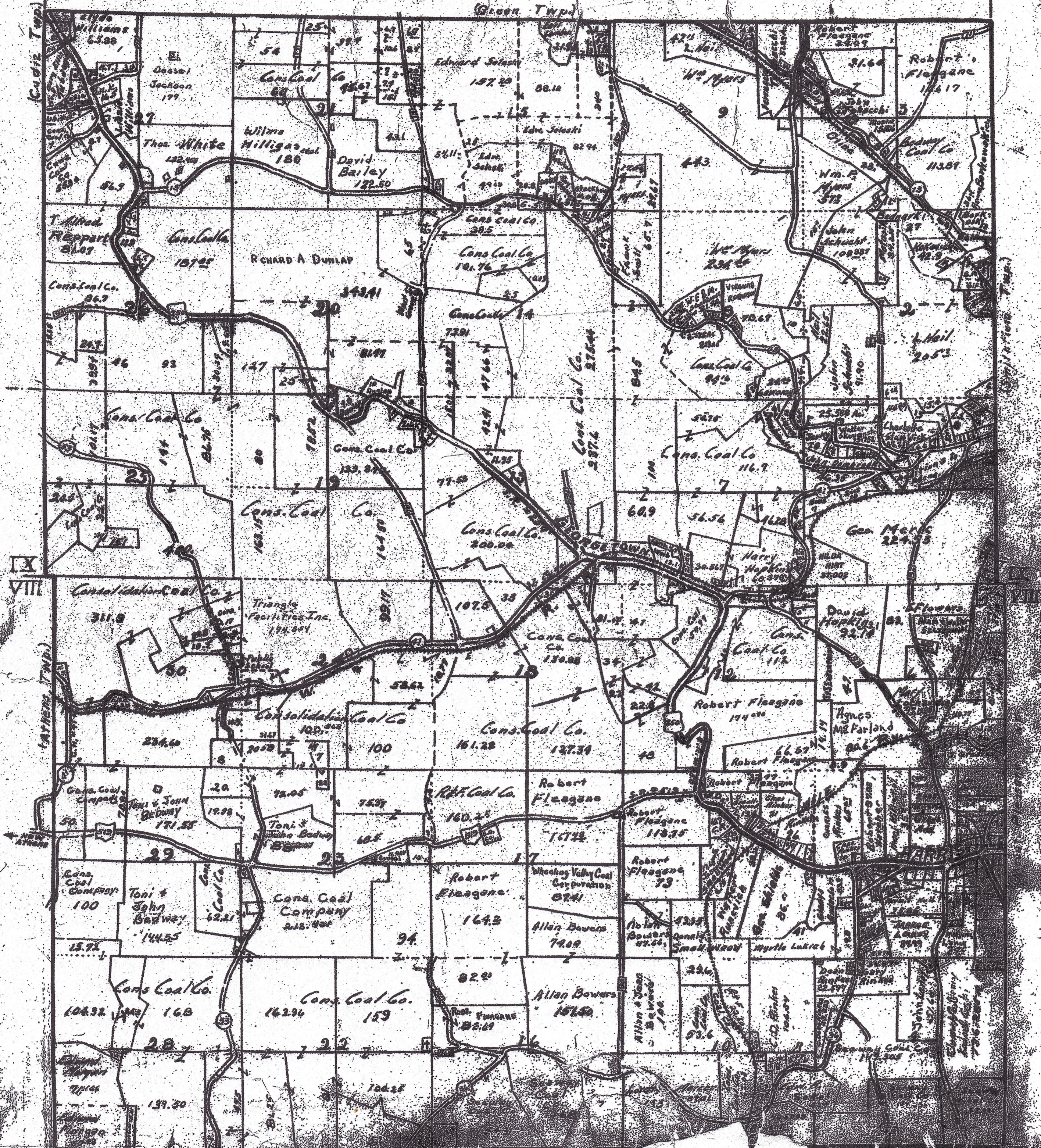
Howard Stitt Harrison County Engineer

RANGE 5 | RANGE 4

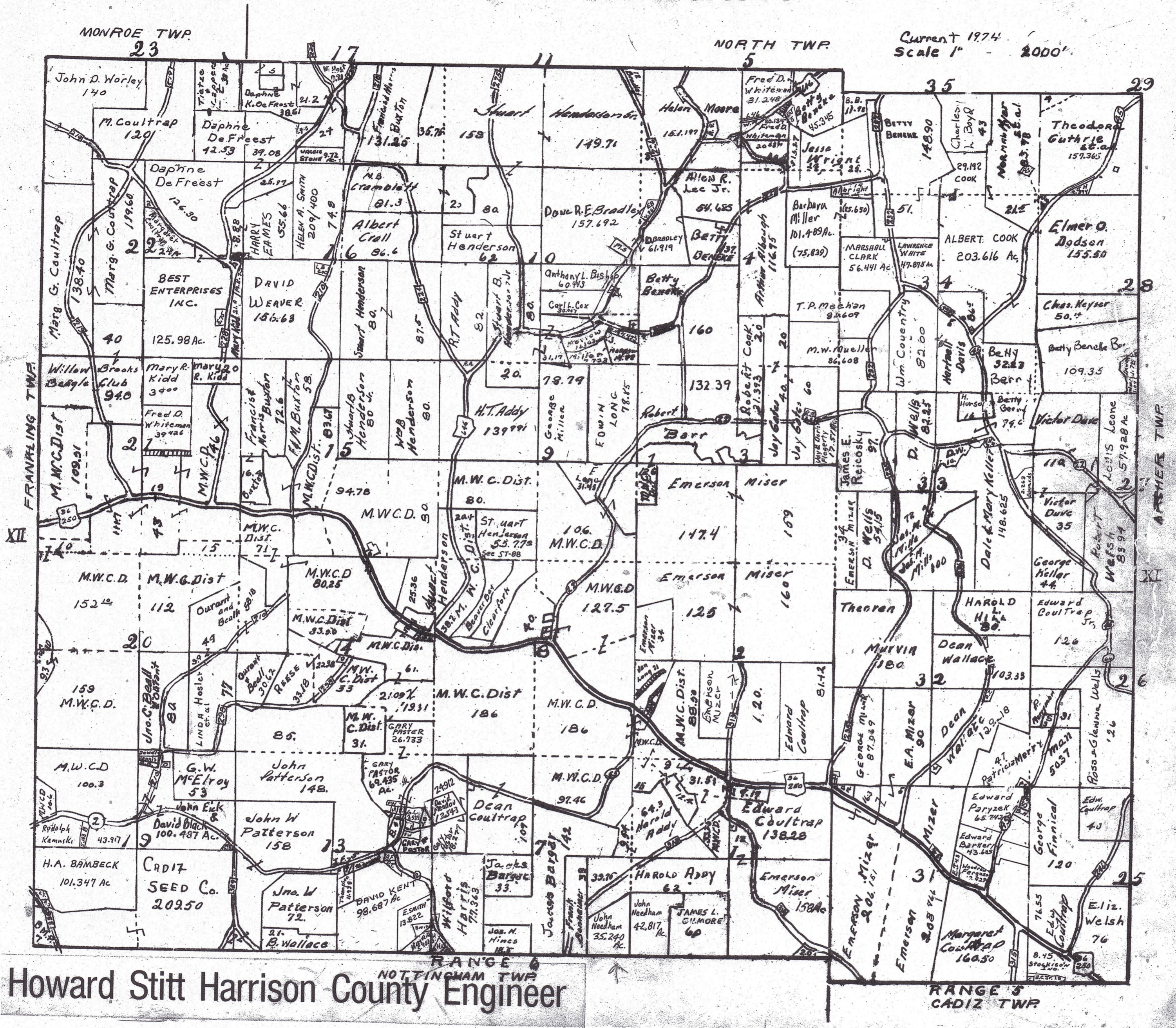
SHORT CREEK TOWNSHIP

Revised 1974
Scale 1" = 400'

1974



STOCK TOWNSHIP



Howard Stitt Harrison County Engineer

RANGE 5
CADIZ TWP.

Circa 1980

WASHINGTON TWP.

